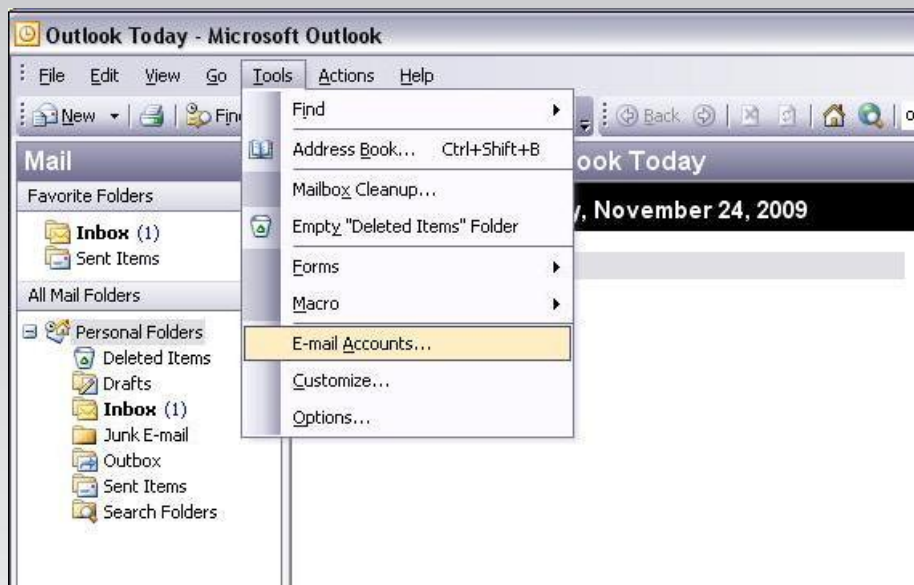
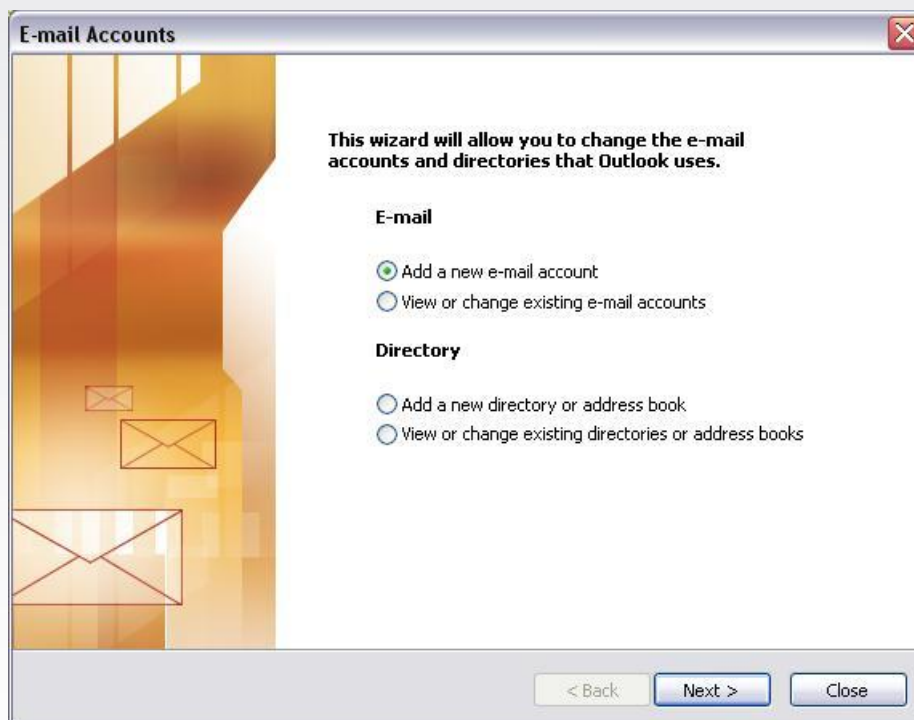


Uputstvo za podešavanje MS Office Outlook 2003 email klijenta

- Podešavanje MS Office Outlook-a započinjemo izborom **E-mail Accounts** opcije iz **Tools** menija. Na slici je prikazan ovaj izbor.

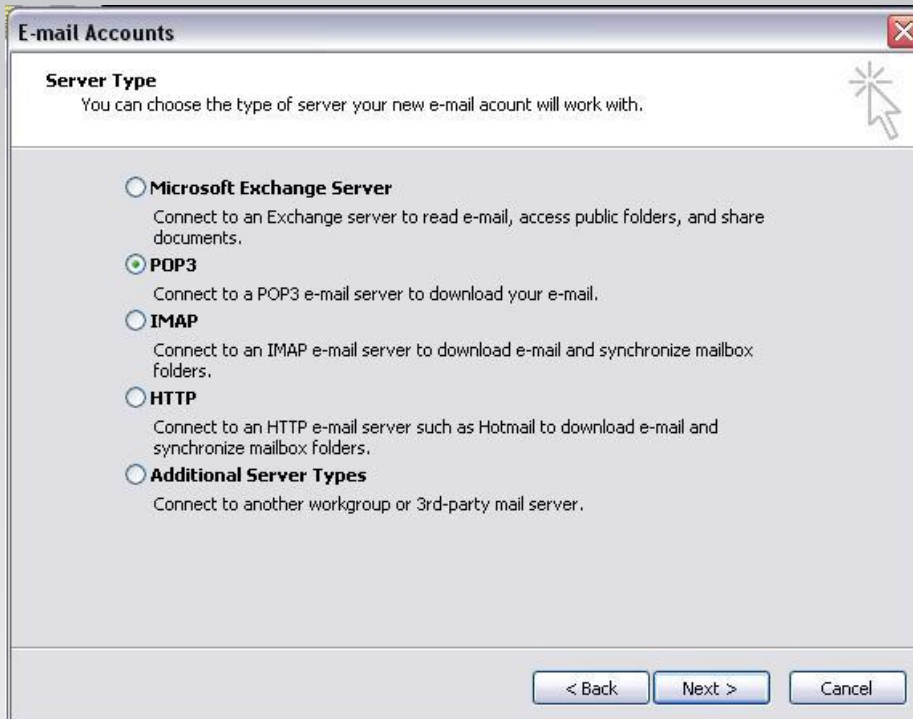


- Kliknite na opciju **Add a new e-mail account**, a zatim na dugme **Next**. Na ovaj način se startuje wizard (čarobnjak) pomoću koga ćete u nekoliko koraka završiti sva podešavanja novog e-mail naloga.



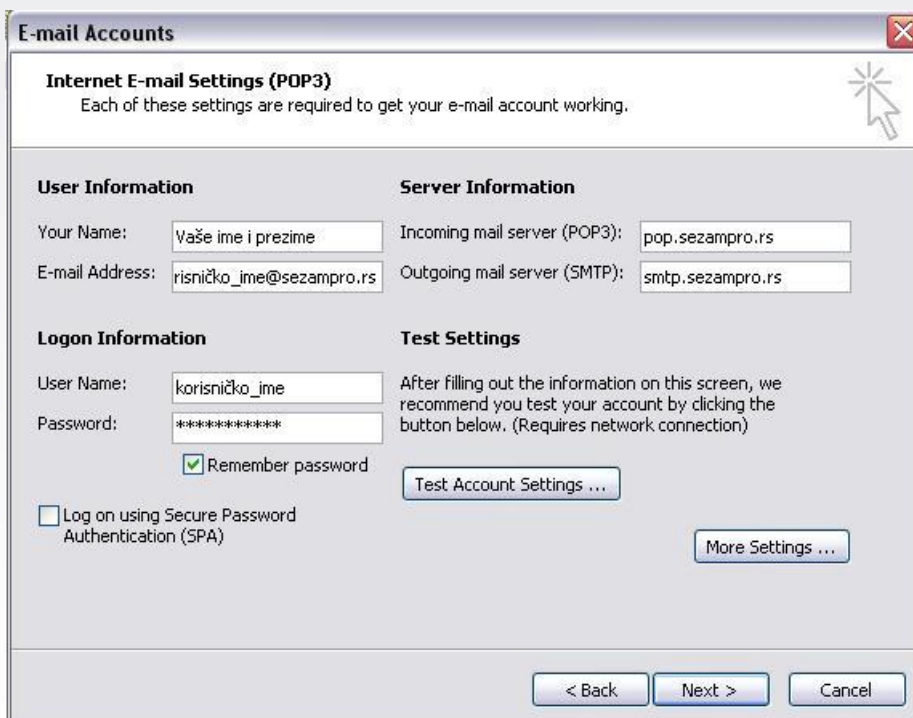
Uputstvo za podešavanje MS Office Outlook 2003 email klijenta

- Kliknite na opciju **POP3**, a zatim na dugme **Next**.



The screenshot shows the 'E-mail Accounts' dialog box with the 'Server Type' section selected. The title bar reads 'E-mail Accounts'. Below the title bar, the text says 'Server Type' and 'You can choose the type of server your new e-mail account will work with.' There are four radio button options: 'Microsoft Exchange Server', 'POP3', 'IMAP', and 'HTTP'. The 'POP3' option is selected. Below these options is 'Additional Server Types'. At the bottom right, there are three buttons: '< Back', 'Next >', and 'Cancel'.

- Na formi **Internet E-mail Settings (POP3)** unesite sledeće parametre:



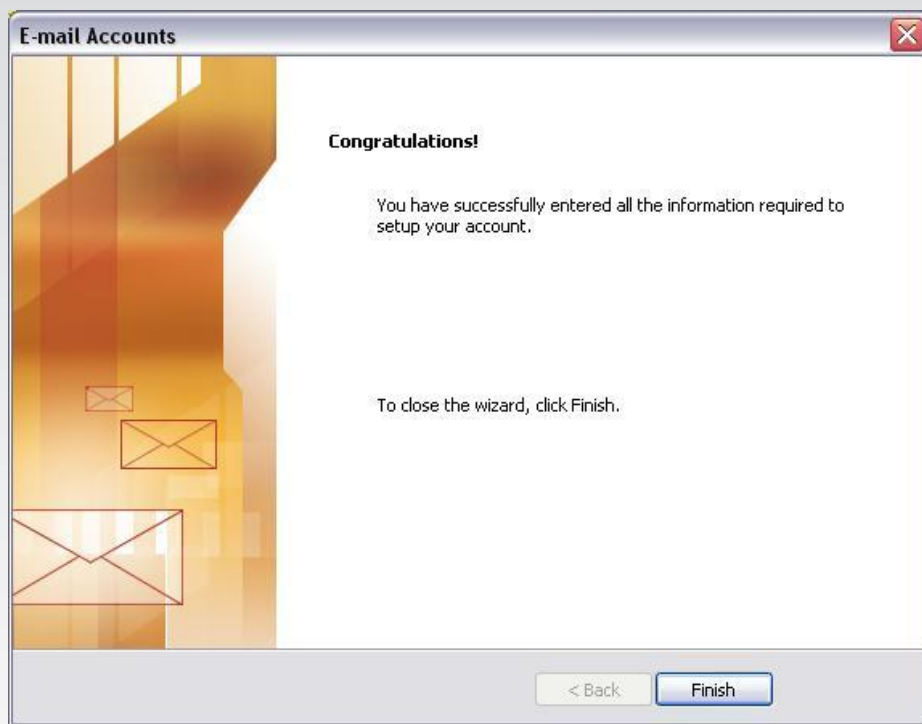
The screenshot shows the 'E-mail Accounts' dialog box with the 'Internet E-mail Settings (POP3)' section selected. The title bar reads 'E-mail Accounts'. Below the title bar, the text says 'Internet E-mail Settings (POP3)' and 'Each of these settings are required to get your e-mail account working.' The form is divided into four sections: 'User Information', 'Server Information', 'Logon Information', and 'Test Settings'. 'User Information' includes 'Your Name' (Vaše ime i prezime) and 'E-mail Address' (risničko_ime@sezampro.rs). 'Server Information' includes 'Incoming mail server (POP3)' (pop.sezampro.rs) and 'Outgoing mail server (SMTP)' (smtp.sezampro.rs). 'Logon Information' includes 'User Name' (korisničko_ime), 'Password' (*****), and a checked 'Remember password' checkbox. 'Test Settings' includes a 'Test Account Settings ...' button. At the bottom right, there is a 'More Settings ...' button. At the bottom, there are three buttons: '< Back', 'Next >', and 'Cancel'.

Uputstvo za podešavanje MS Office Outlook 2003 email klijenta

- ✓ U polje **Your Name** unesite Vaše ime i prezime.
- ✓ U polje **E-mail Address** unesite Vašu e-mail adresu u obliku: **korisničko_ime@sezampro.rs** .
- ✓ U polje **User Name** unesite Vaše korisničko ime (bez @sezampro.rs) .
- ✓ U polje **Incoming mail server** (POP3) unesite **pop.sezampro.rs**.
- ✓ U polje **Outgoing mail server** (SMTP) unesite **smtp.sezampro.rs**.

Kada se uverite da su svi parametri pravilno upisani možete nastaviti dalje jednostavnim klikom na opciju **Next** .

- Kada se pojavi maska **Congratulations**, kliknite na dugme **Finish**.



Ovim smo završili proceduru podešavanja MS Office Outlook -a.

Ukoliko budete imali ikakvih nejasnoća ili problema, molimo Vas da se obratite korisničkom servisu telefonskim putem na:

011 4100 100.

Sve tekuće informacije možete naći i na našem sajtu : www.orientelekom.rs